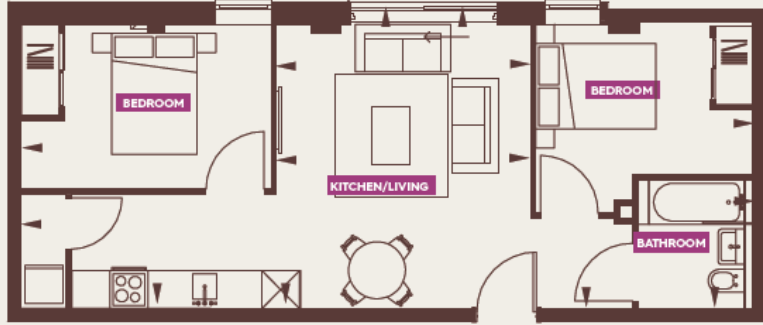


**UNDER OFFER**

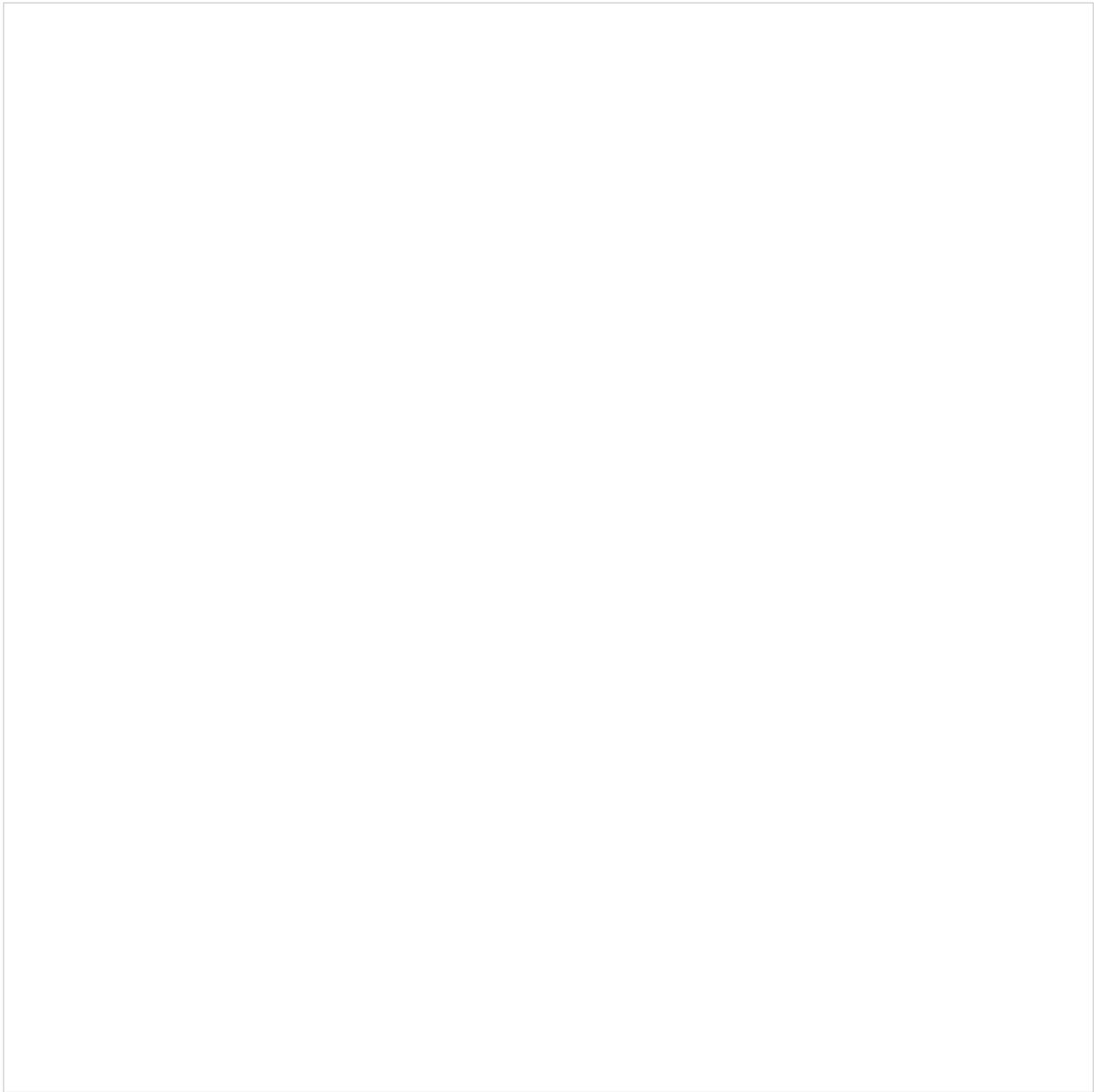
Property Type:	Flat/Apartment
Bedrooms:	2
Summary:	Situated in the heart of Croydon, this stylish two-bedroom apartment in Canius House offers contemporary urban living with a spacious open-plan layout, a modern fitted kitchen, and a private balcony.
Description:	Located within the sought-after Canius House development, this beautifully presented two-bedroom apartment combines modern design with practicality.
Date Available:	Available Now
Rent (PCM):	£1,500

55a High St Wimbledon SW19 5BA tel: 020 8946 7661 [info@mosslondonlettings.co.uk](mailto:info@mosslondonlettings.co.uk)

TYPICAL 2 BEDROOM - FLAT NUMBER 1



Score	Energy rating	Current	Potential
92+	<b>A</b>		
81-91	<b>B</b>		Ene
69-80	<b>C</b>		
55-68	<b>D</b>		
39-54	<b>E</b>	44 E	44 E
21-38	<b>F</b>		
1-20	<b>G</b>		



Map supplied by Google Maps. To open map in your browser please [click here](#).