



Property Type: Flat/Apartment

Bedrooms: 2

Summary: A very well presented light and bright top floor 2 bedroom flat in a popular block in West Wimbledon. Unfurnished available immediately.

Description: Light and bright 2 bedroom top floor apartment in a fantastic location for local amenities. Large lounge with west facing balcony, double glazed throughout, gas central heating, modern bathroom and kitchen and 2 double bedrooms. Large communal gardens and off street parking.

Date Available: 27 Mar 2025

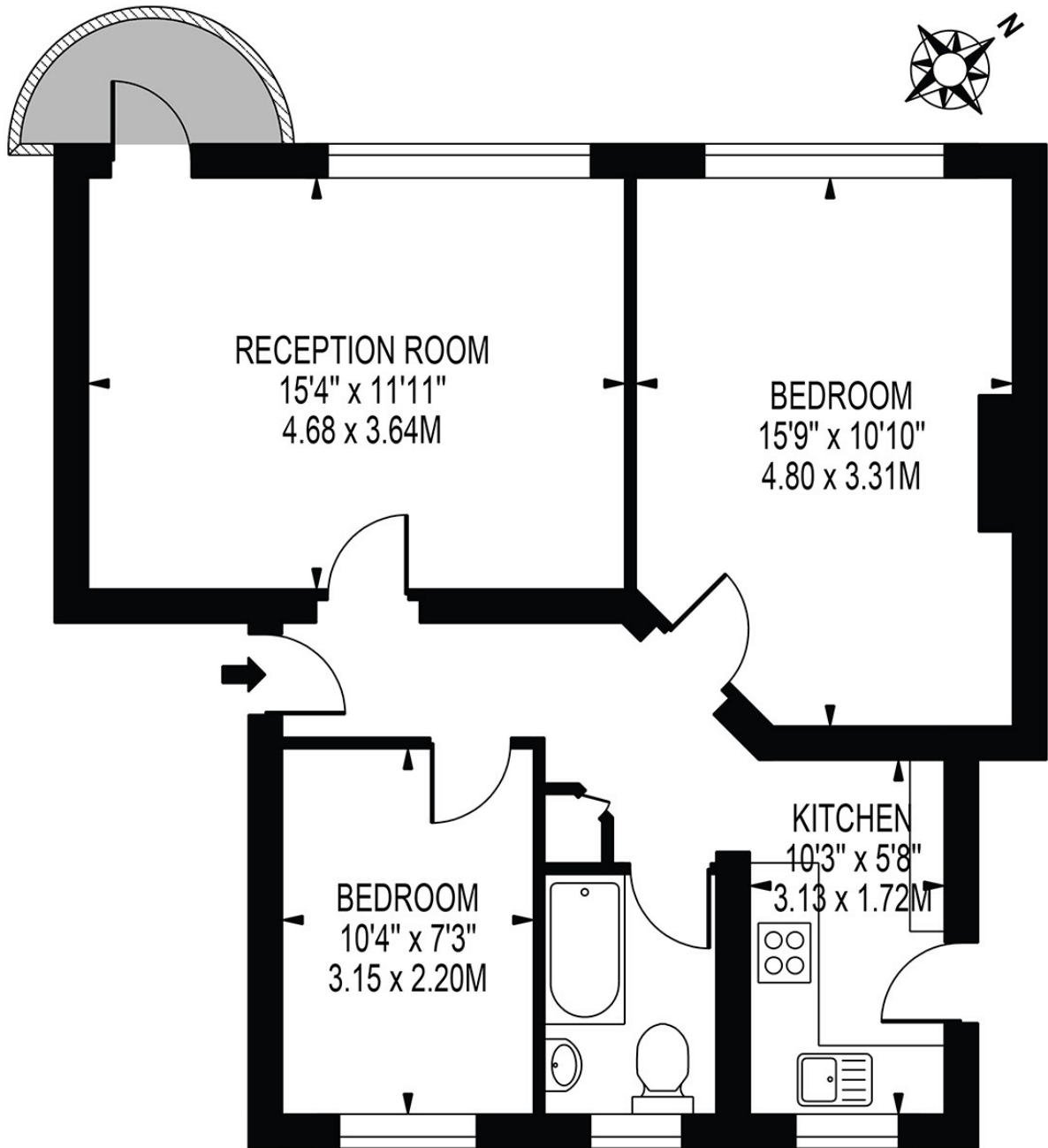
Rent (PCM): £1,700

212 Copse Hill Wimbledon SW20 0SP tel: 020 8946 7661 info@moss Wimbledon

UNDER OFFER

TOTHAM LODGE

APPROXIMATE GROSS INTERNAL FLOOR AREA: 625 SQ FT - 58.06 SQ M



SECOND FLOOR

FOR ILLUSTRATION PURPOSES ONLY

THIS FLOOR PLAN SHOULD BE USED AS A GENERAL OUTLINE FOR GUIDANCE ONLY AND DOES NOT CONSTITUTE IN WHOLE OR IN PART AN OFFER OR CONTRACT. ANY INTENDING PURCHASER OR LESSEE SHOULD SATISFY THEMSELVES BY INSPECTION, SEARCHES, ENQUIRIES AND FULL SURVEY AS TO THE CORRECTNESS OF EACH STATEMENT. ANY AREAS, MEASUREMENTS OR DISTANCES QUOTED ARE APPROXIMATE AND SHOULD NOT BE USED TO VALUE A PROPERTY OR BE THE BASIS OF ANY SALE OR LET.



Map supplied by Google Maps. To open map in your browser please [click here](#).