



**Property Type:** Flat/Apartment

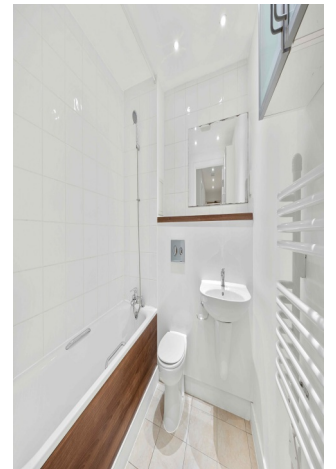
**Bedrooms:** 2

**Summary:** Contemporary modern 2 bedroom 2 bathroom apartment situated just by Merton abbey Mills

**Description:** This contemporary two-bedroom, two-bathroom apartment delivers style and functionality in an unbeatable location near Abbey Mills. The property features a sleek open-plan kitchen / recetion area leading to balcony Appliances including a washing machine, fridge/freezer, electric oven, and hob.

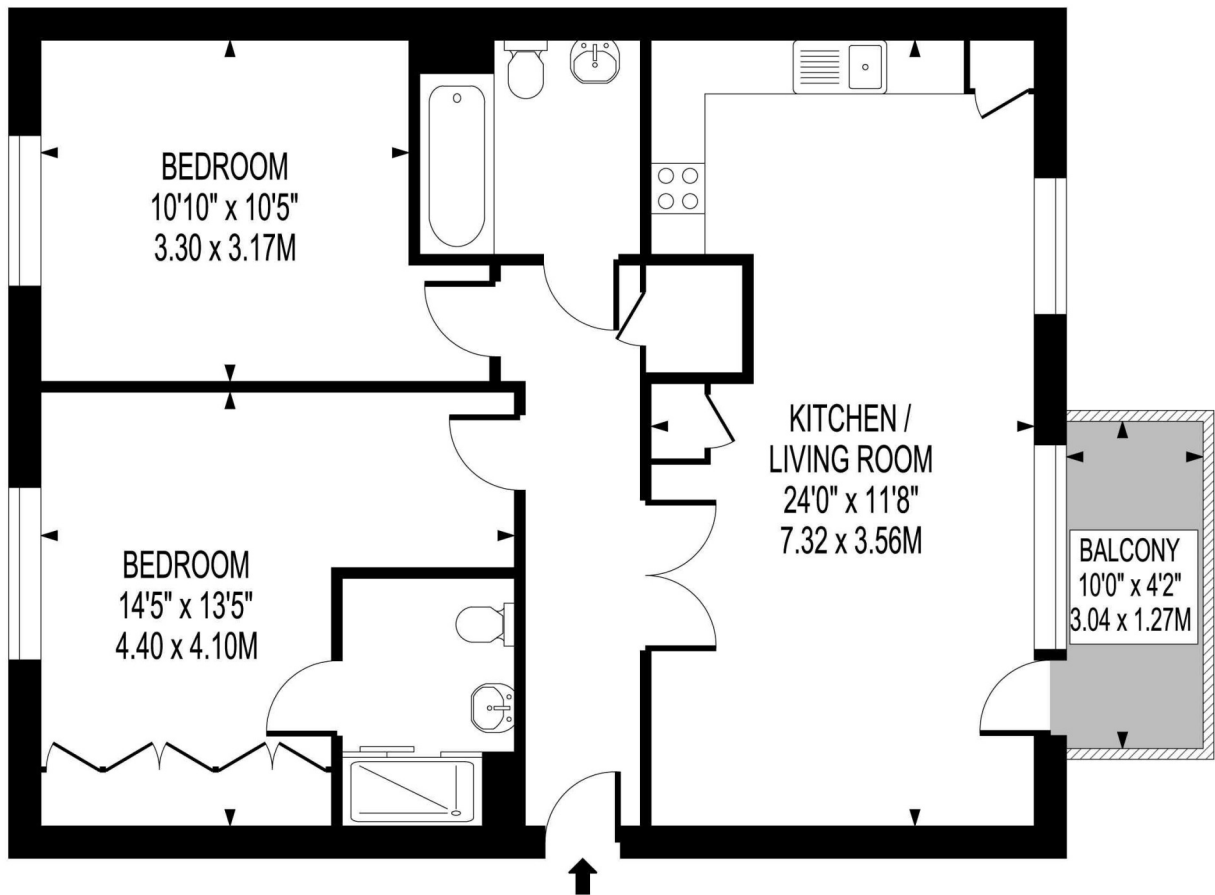
**Date Available:** 18 Jan 2025

**Rent (PCM):** £1,950



# BARON HOUSE

APPROXIMATE GROSS INTERNAL FLOOR AREA : 725 SQ FT- 67.40 SQ M

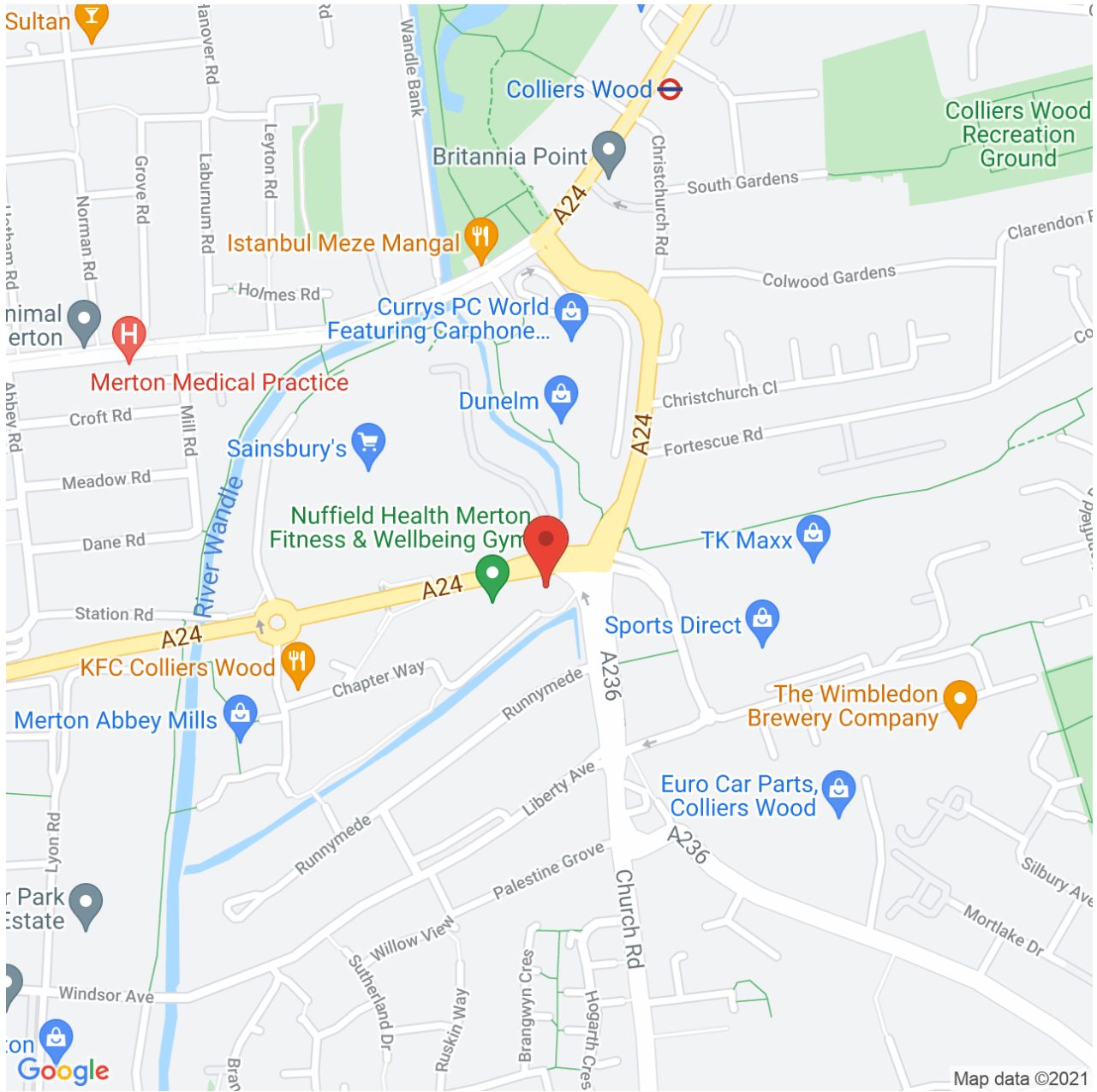


FIRST FLOOR

FOR ILLUSTRATION PURPOSES ONLY

THIS FLOOR PLAN SHOULD BE USED AS A GENERAL OUTLINE FOR GUIDANCE ONLY AND DOES NOT CONSTITUTE IN WHOLE OR IN PART AN OFFER OR CONTRACT. ANY INTENDING PURCHASER OR LESSEE SHOULD SATISFY THEMSELVES BY INSPECTION, SEARCHES, ENQUIRIES AND FULL SURVEY AS TO THE CORRECTNESS OF EACH STATEMENT. ANY AREAS, MEASUREMENTS OR DISTANCES QUOTED ARE APPROXIMATE AND SHOULD NOT BE USED TO VALUE A PROPERTY OR BE THE BASIS OF ANY SALE OR LET.

Score	Energy rating	Current	Potential
92+	<b>A</b>		
81-91	<b>B</b>		85 B
69-80	<b>C</b>	79 C	
55-68	<b>D</b>		
39-54	<b>E</b>		
21-38	<b>F</b>		
1-20	<b>G</b>		



Map supplied by Google Maps. To open map in your browser please click [here](#).