



**Property Type:** Flat/Apartment

**Bedrooms:** 2

**Summary:** Top floor flat. Large kitchen/living room. High ceilings, double glazing, bath/wc/shower.

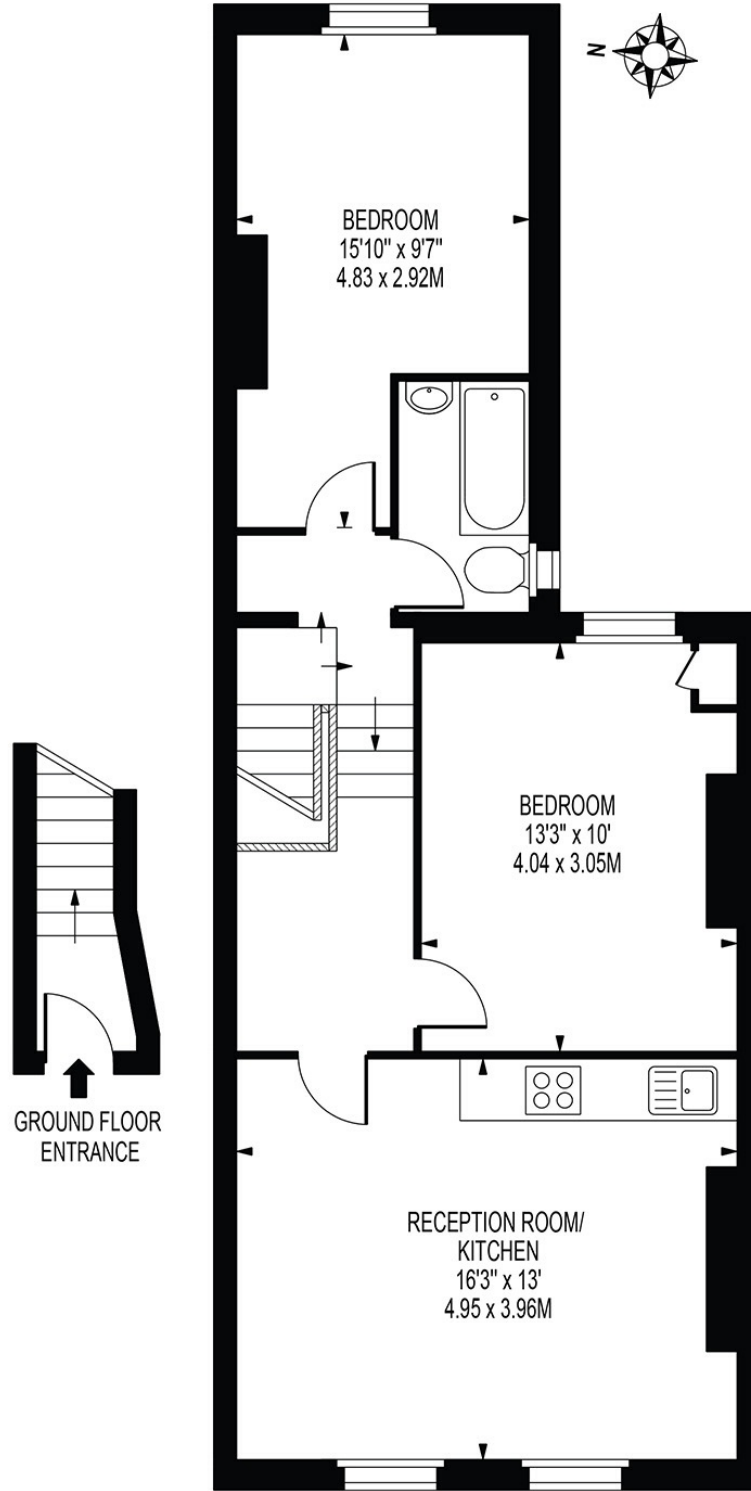
**Description:** Bright and spacious split level Victorian conversion. Open plan kitchen/living room. 2 double bedrooms, high ceilings, double glazing, bath/wc/shower. Washing machine, dishwasher, fridge freezer. Newly painted throughout. Early viewing highly recommended.

**Date Available:** Available Now

**Rent (PCM):** £1,950

### GLADSTONE ROAD

APPROXIMATE GROSS INTERNAL FLOOR AREA: 642 SQ FT - 59.64 SQ M



FIRST FLOOR

FOR ILLUSTRATION PURPOSES ONLY

THIS FLOOR PLAN SHOULD BE USED AS A GENERAL OUTLINE FOR GUIDANCE ONLY AND DOES NOT CONSTITUTE IN WHOLE OR IN PART AN OFFER OR CONTRACT. ANY INTENDING PURCHASER OR LESSEE SHOULD SATISFY THEMSELVES BY INSPECTION, SEARCHES, ENQUIRIES AND FULL SURVEY AS TO THE CORRECTNESS OF EACH STATEMENT. ANY AREAS, MEASUREMENTS OR DISTANCES QUOTED ARE APPROXIMATE AND SHOULD NOT BE USED TO VALUE A PROPERTY OR BE THE BASIS OF ANY SALE OR LET.

Score	Energy rating	Current	Potential
92+	<b>A</b>		
81-91	<b>B</b>		
69-80	<b>C</b>	73 C	78 C
55-68	<b>D</b>		
39-54	<b>E</b>		
21-38	<b>F</b>		
1-20	<b>G</b>		



Map supplied by Google Maps. To open map in your browser please click [here](#).